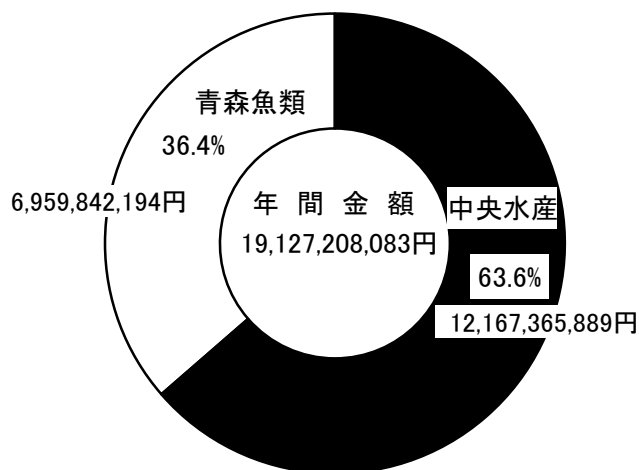
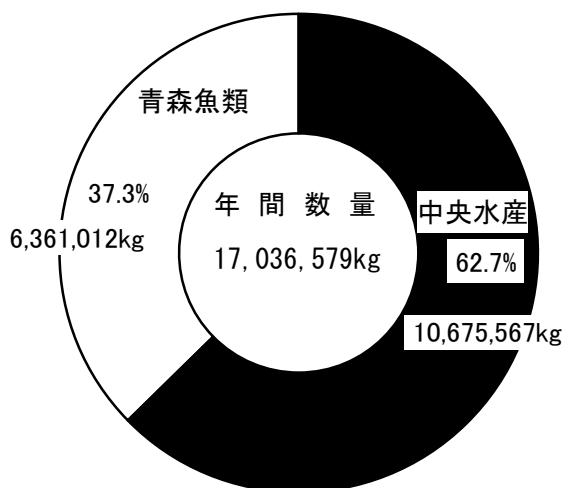
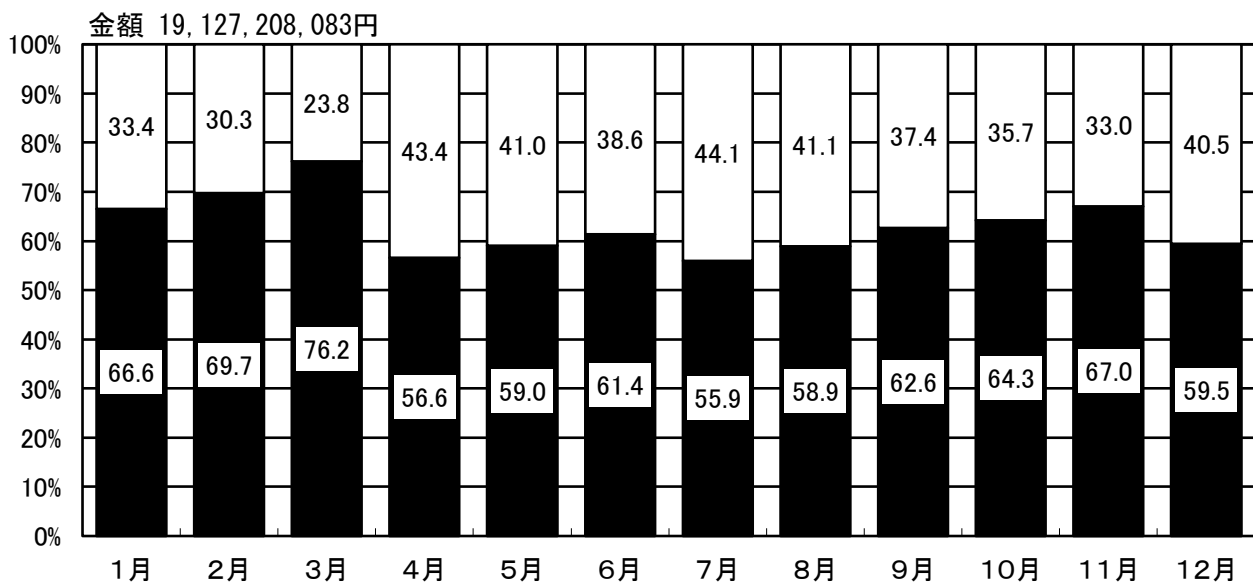
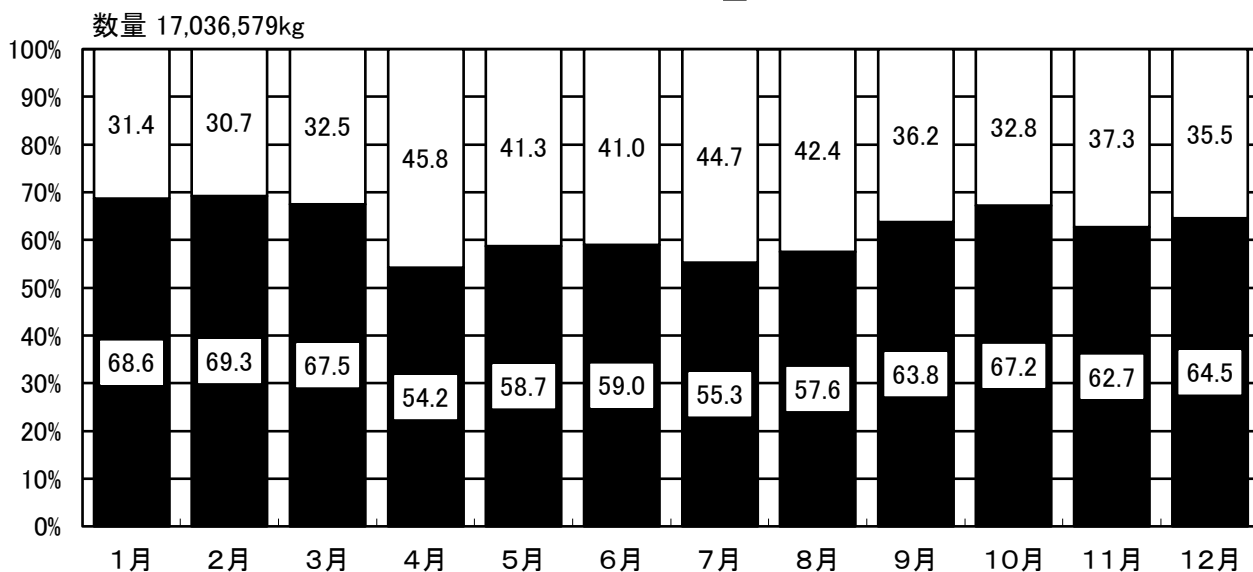


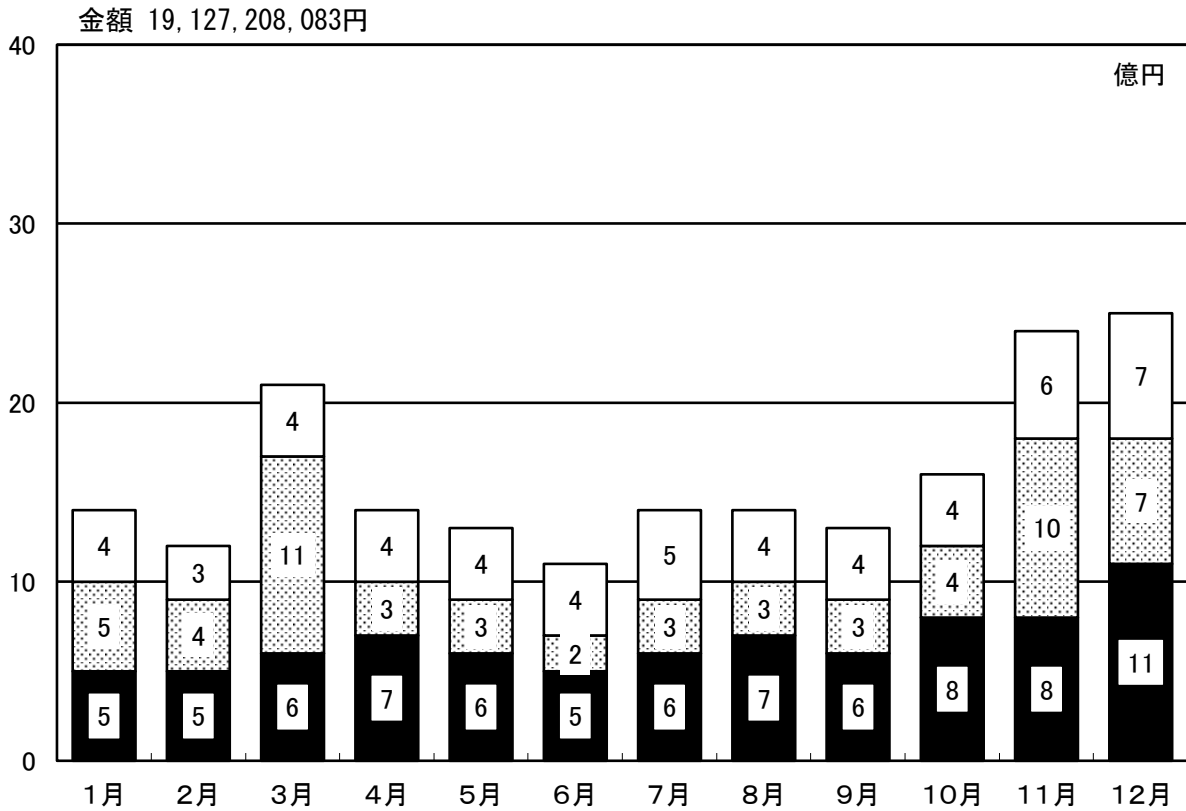
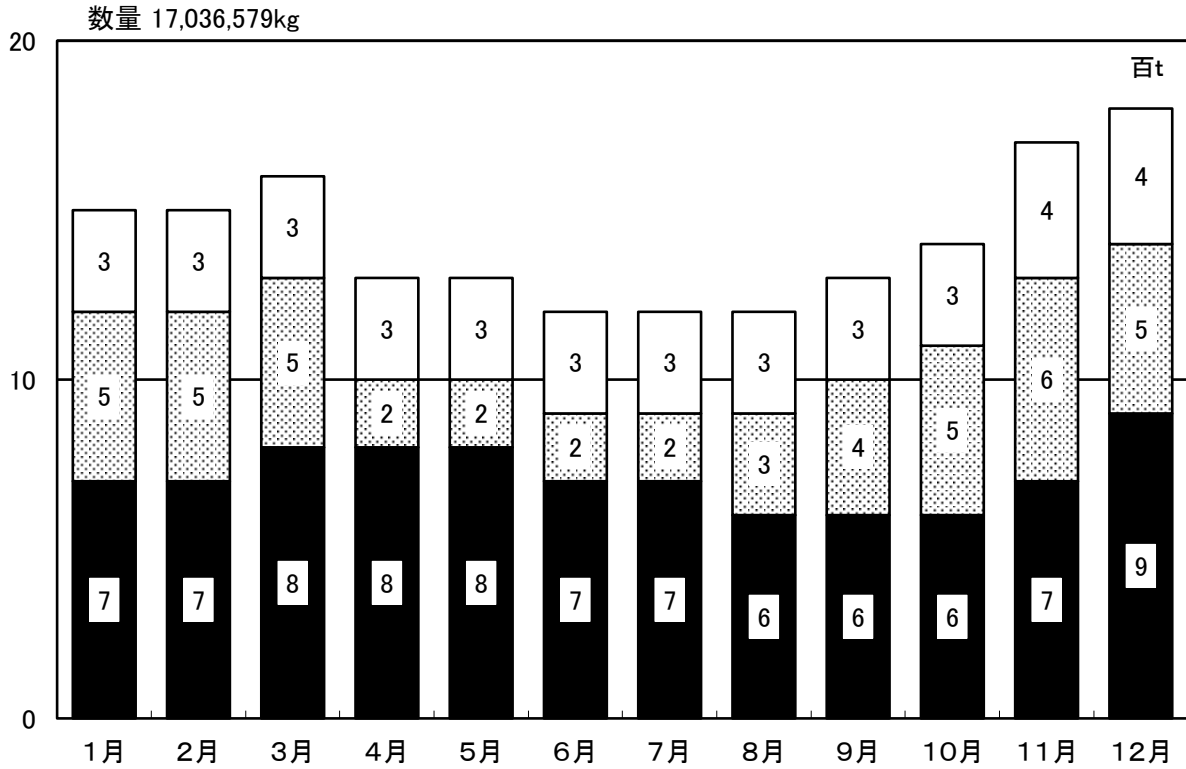
# 卸売業者月別取扱高対比図

■ 中央水産      □ 青森魚類

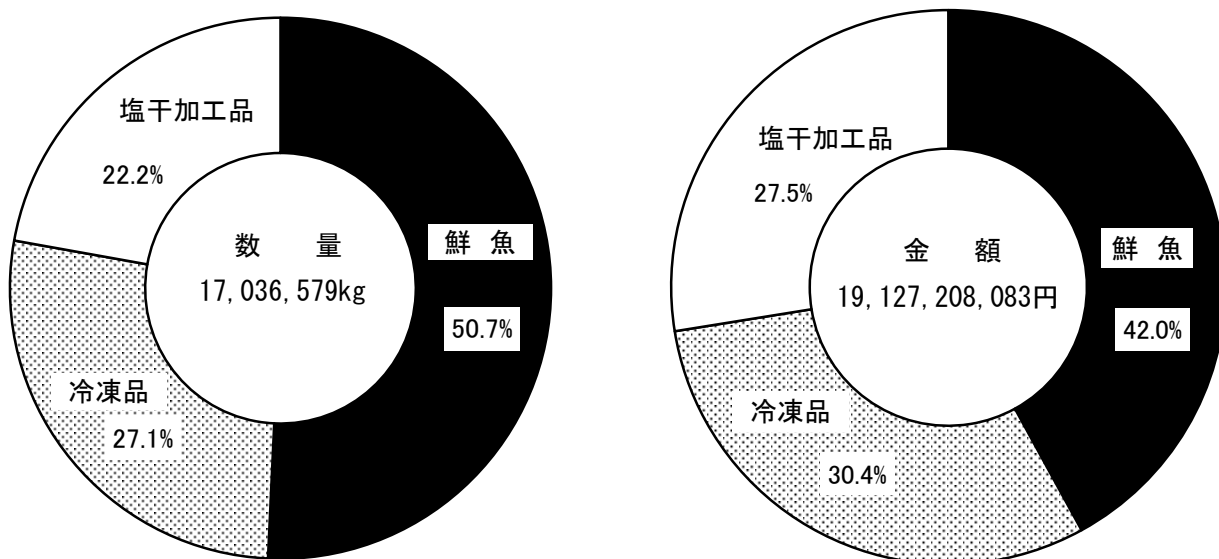


# 種別・月別取扱高対比図

■ 鮮魚      ▨ 冷凍品      □ 塩干加工品



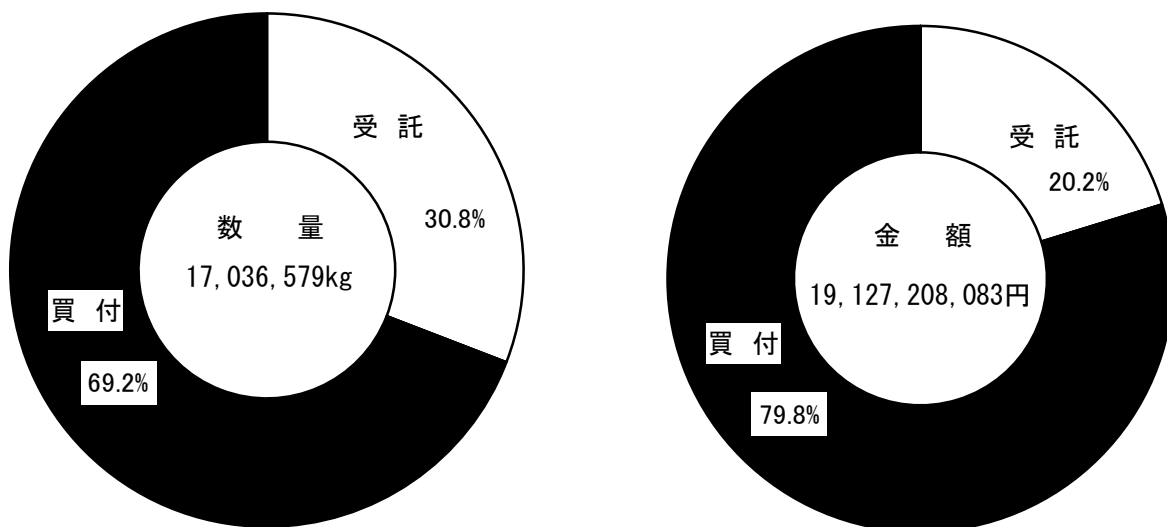
## 種 別 取 扱 高 対 比 図



## 受託・買付別・月別取扱高表

	取扱数量 (kg)			取扱金額 (円)		
	受託	買付	計	受託	買付	計
1月	416,310	1,081,538	1,497,848	249,288,837	1,131,832,572	1,381,121,409
2月	348,834	1,040,777	1,389,611	208,609,884	1,046,776,742	1,255,386,626
3月	460,778	1,160,110	1,620,888	260,783,217	1,772,940,572	2,033,723,789
4月	483,396	939,676	1,423,072	298,653,443	1,066,036,329	1,364,689,772
5月	485,874	795,800	1,281,674	302,434,522	933,686,815	1,236,121,337
6月	452,176	757,802	1,209,978	288,223,495	932,779,754	1,221,003,249
7月	437,265	822,713	1,259,978	278,319,156	1,057,413,198	1,335,732,354
8月	389,631	836,760	1,226,391	324,807,034	1,068,069,893	1,392,876,927
9月	394,325	835,572	1,229,897	339,891,653	1,005,329,980	1,345,221,633
10月	404,784	983,439	1,388,223	383,081,309	1,294,571,619	1,677,652,928
11月	470,107	1,225,667	1,695,774	383,741,172	1,986,146,272	2,369,887,444
12月	512,034	1,301,211	1,813,245	554,676,430	1,959,114,185	2,513,790,615
計	5,255,514	11,781,065	17,036,579	3,872,510,152	15,254,697,931	19,127,208,083

## 受託・買付別取扱高対比図



## 卸売業者販売先別取扱高表

	仲卸業者	売買参加者	その他	合計
数量(kg)	7,166,038	2,721,466	7,149,075	17,036,579
金額(円)	7,099,398,721	3,283,157,530	8,744,651,832	19,127,208,083

## 卸売業者販売先別取扱高対比図

