



## Assistance Dog (Assistance Dogs for Physically Disabled Persons) Information

The term "Assistance Dogs" for persons with physical disabilities refers to "guide dogs", "hearing dogs", and "service dogs" that assist persons with disabilities of the eyes, ears, or limbs.

These dogs are certified in accordance with "The Act on Assistance Dogs for Physically Disabled Persons" and have received special training.

They are partners of persons with disabilities and therefore not pets.

As they are properly trained and taken care of, they are able to follow social manners and are kept clean. Therefore these dogs are accepted in many areas where people tend to go.

Assistance dogs are essential for the independence and social participation of persons with physical disabilities. We hope that everyone will take some time to get a better understanding of assistance dogs and accept them as members of society.



### Types of Assistance Dogs



#### ○ Guide Dogs

Guide dogs help people who are not able to see or have difficulty seeing safely navigate through town.

The dogs avoid obstacles and notify their handlers about the path they are walking on, such as turns in the road.

Guide dogs wear harnesses.

#### ○ Hearing Dogs

Hearing dogs notify their handlers, who are not able to hear or have hearing disabilities, of various sounds in daily life. They recognize and notify their handlers of sounds such as doorbells, FAX ring alerts, and babies crying.

Hearing dogs wear vests with a tag written "Hearing Dog".

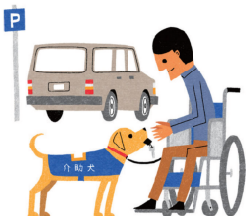


#### ○ Service Dogs

Service dogs help people with disabilities in their limbs with their daily activities.

These dogs can aid their handler by picking things up and handing them to him/her, bringing over requested objects, and helping with putting on and removing clothes.

Service dogs wear vests with a tag written "Service Dog".



### Assistance Dogs go everywhere with their users.

It is required under "The Act on Assistance Dogs for Physically Disabled Persons" that assistance dogs be accepted in various places a person may go. Please do not prohibit their entry just because it is a "dog".

#### ● The following places are required to accept assistance dogs:

- Public facilities that are managed by the country or local public organizations
- Public transportation (such as trains, buses and taxis)
- Public facilities such as commercial facilities, restaurants, hospitals and hotels which are used by the general public
- Offices (work places)
  - Offices of the country or local public organizations
  - Private businesses with 50 or more employees



#### ● Places which should make efforts to accept assistance dogs are as follows:

- Offices (work places)
  - Private businesses with less than 50 employees
- Private housing

